

Overview

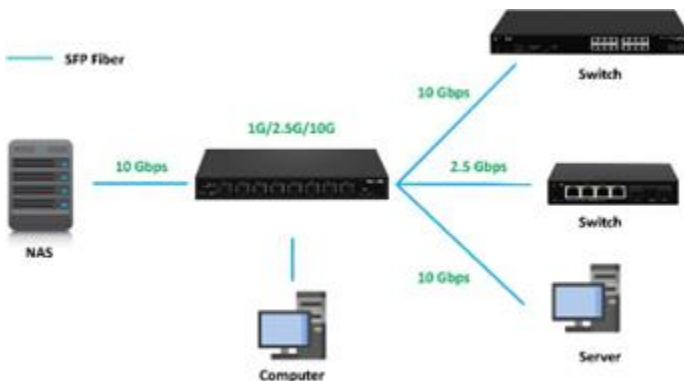
Painless Upgrading your Network Connection to 10G Super High speed Web Management Switch

Web Managed switch, which supports 8 SFP+ ports for delivering up to 10Gbps extra high-speed connection on fiber optic. Each port can support 1G/2.5G/10G to connective devices (depending on the SFP module used (not included)) Supports WEB Management function and is easy to manage and maintain. The easy to operate this switch has several functions like VLAN setting for a more secure connection. QoS to have more control of the bandwidth and many more like, IGMP, Loop Prevention, Port-Base Mirroring, Port Isolation, Bandwidth Control, Security (MAC Address /table /search / static MAC; Storm control and more. With the 10G Multi-Giga switch, you can connect to a variety of 10Gb-enabled devices, such as SWITCH | NAS | NVR | PC | Server , for enjoying faster experience and handle bandwidth-hungry applications. Designed in a slim sized solid housing, it's an affordable, space-saving solution suitable to SMB and Home network applications.



Features and Specifications 1G/2.5G/10G SFP+ Port

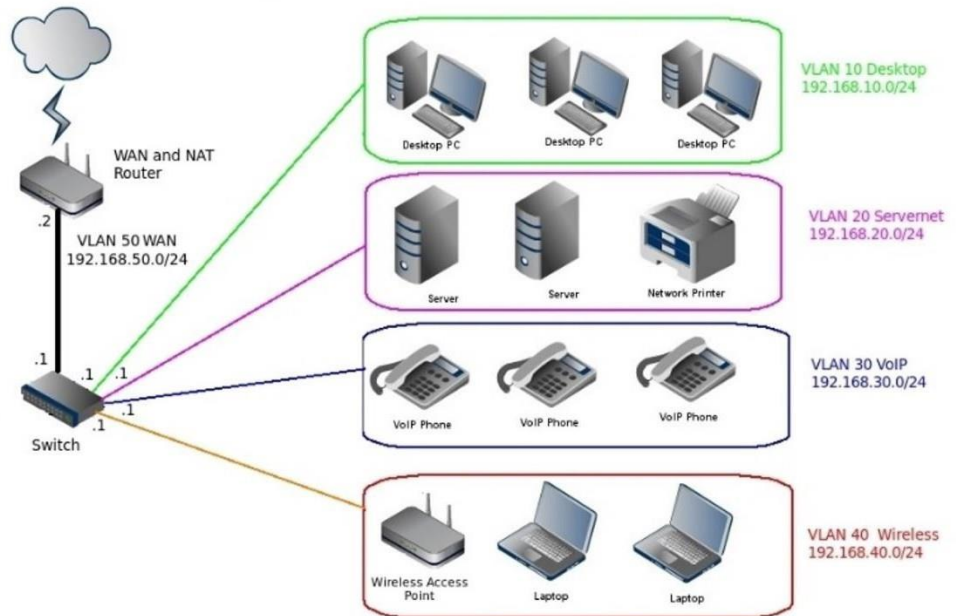
- 8 x 1G/2.5G/10G SFP/SFP+ ports
- Web Smart Management
- QoS; Priority management
- VLAN: enhanced security and performance
- All ports at Multi Gigabit high speed, auto-negotiation
- Providing satisfied bandwidth for various network devices, such as Backbone for switch network, Multi-media, NAS, Server system
- Super Fast 10Gbps SFP+
- Compact size for SMB and Home Network Connectivity



Built for High-Speed connectivity

1G/2.5G/10G SFP+ Multi Gigabit perfect for various applications

With 10G Multi-Giga switch you can connect to a variety of 10Gb enabled devices, such as NAS | NVR | PC | Server, the SFP+ ports can work at 1G/2.5G/10G depending on the module used (module not included) , for enjoying faster experience and handle bandwidth-hungry applications.

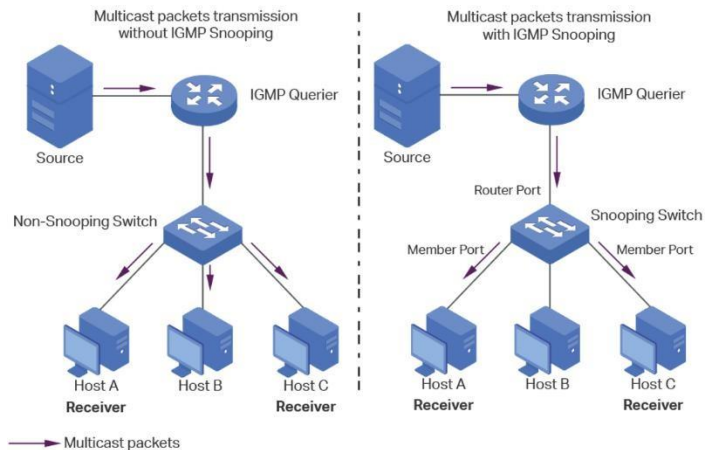


QoS for enhanced traffic control

QoS (Quality of service) is the ability to provide different priority to different applications, users, or video/voice/data flows, or to guarantee a stable level of performance to each data flow. This can be with Port-based Priority or Priority to queue.

IGMP Snooping Multicast

Multicast protocols is compliant with IGMPv1/v2/v3 and supports abundant multicast features such as IGMP v2/v3 snooping and fast leave. By analyzing the IGMP messages received, L2 devices establish a mapping between ports and MAC multicast addresses and forward the multicast data accordingly.



High Video Streaming

Moreover, higher bandwidth improves the playback quality of 4K/8K videos, prevents lag for Gaming, smooths speed when download or upload large data, increases data transfer speed when doing backup to a NAS drive.



Specification

Model	
<p>Hardware</p> <ul style="list-style-type: none">• Device Interface: 8 x 1/2.5G/10G SFP/SFP+ 8-port totally Auto MDI/MDIX• Standard IEEE802.3u 100Base-TX IEEE802.3ab Gigabit 1000Base-T IEEE802.3bz 2.5GBase-T IEEE 802.3z 1000BASE-X Gigabit Ethernet (optical fiber) IEEE 802.3ae 10G Ethernet (optical fiber) IEEE802.3x Flow Control and Back Pressure IEEE 802.3ad port trunk with LACP IEEE 802.1D Spanning Tree Protocol IEEE 802.1w Rapid Spanning Tree Protocol IEEE 802.1p Class of Service IEEE 802.1Q VLAN tagging IEEE 802.3az (Efficient and Energy saving Ethernet)• LED Indicators: PWR (power supply), Port LED Blue (10G Link), Port LED Green (1/2.5G Link)• Mechanical Solid Metal Housing, Desktop <p>Switch Architecture Performance</p> <ul style="list-style-type: none">• Switching architecture: Store and Forward Switch Capacity: Back-plan up to 160Gbps Packet Forwarding Rate; 119.04Mpps Packet Cache: 12Mbit MAC Address: 16K VLAN: VLAN range 1-4094, with a maximum active VLAN of 4K Transfer mode: Store and Forward MTBF:100000 hour <p>Web Management Software Function L2</p> <ul style="list-style-type: none">• Port Setting: Port Switch Configuration, Port Description Configuration, Port Duplex Configuration, Port Flow Control Configuration, Jumbo Frame up to 16356bytes, EEE• Link Aggregation: Support load sharing strategy based on MAC and IP-MAC addresses, Static and dynamic aggregation groups, Support LACP, Max. 8 members per group• Storm Control: Broadcast, Unknown Multicast, Unknown Unicast	<ul style="list-style-type: none">• Port Mirroring: One to one monitor, Many to one monitor, Ingress/Egress/Both, Up to 4 session groups• Port Security: MAC Address Constraints, Protect/Restrict/Shutdown• Port Isolation: Supported• Port Rate-limit: Bandwidth Control• VLAN: Access/Trunk/Hybrid, VLAN Tunnel (Q-in-Q Tunnel), VLAN range 1-4094, maximum active VLAN is 4K• MAC Address: Static MAC address, MAC Address Filtering• Spanning Tree Protocol: STP/RSTP, BPDU Filter, BPDU Guard, Edge Port• Multicast: IGMP Snooping, IGMP V1/V2/V3, Router Port, Static Multicast• QoS: Traffic classification based, Strict priority and WRR, Port Priority, 802.1P Priority, IP DSCP Priority, Supports up to 8 queues per port, Priority Remark• Services: Supported• Security: Supported• DHCP Snooping: Supported• Diagnostics: Supported• Ping: Supported• Electrical Port Test: Supported <p>Management</p> <ul style="list-style-type: none">• Manager Access: HTTP, SNMP• Manager IP: Static Address, DHCP Client, Manager VLAN, DNS• SNMP: V1/V2C, Community Name, Trap host• SNMP MIB: RFC 1213 MIB-II, RFC 1643 Ethernet MIB, RFC 2863 Interface MIB• User• Firmware: Firmware Upgradable• Configuration: Upload and Download• Save, Restart• Factory Defaults

* Specification will be changed without prior notice

* All trademarks, logos and brand names are the property of their respective owners.

Specification

Model	
<ul style="list-style-type: none">• Fiber Medium: 1000BASE-SX: 62.5µm MMF (Multimode optical fiber) (Minimum range: 2m~275m) or 50µm MMF 1000BASE-LX: 62.5µm/50µm MMF (Minimum range: 2m~550m) or 10µm SMF (Minimum range: 2m~5km) 2500BASE-X: G.652D SMF (Single-mode optical fiber) (Minimum range: 2m~500m or 2m~5Km) 10GBASE-SR: OM1/OM2/OM3 or above MMF (Operating range: 2m~300m) 10GBASE-LR: IEC and B1.1 and B1.3 SMF (Minimum range: 2m~10km) <p>Power</p> <ul style="list-style-type: none">• Power Input: DC 12V/2A Power Adapter• Power Usages Max: 18W <p>Environment</p> <ul style="list-style-type: none">• Operating Temperature: 0°C to +40°C• Storage Temperature: -40°C to +70°C• Working Humidity: 10%~90%, non-condensing• Storage Humidity: 5%~95%, non-condensing <p>Standard package of switch</p> <ul style="list-style-type: none">• Product size: 22.0 x 12.6 x 2.8 cm(L*W*H)• Package size: 25.9 x 22.8 x 6.0 cm(L*W*H)• Package Weight: N.W: 0.62Kgs; G.W: 0.86Kgs• Package content: 1 x Switch, 1 x Power cord, 1 x QIG. <p>Standard carton package</p> <ul style="list-style-type: none">• Quantity: 20pcs / 1 carton• Dimensions 53.5 x 32.0 x 48.0cm (L*W*H)• Weight 18.2Kgs (G.W)	

* Specification will be changed without prior notice

* All trademarks, logos and brand names are the property of their respective owners.